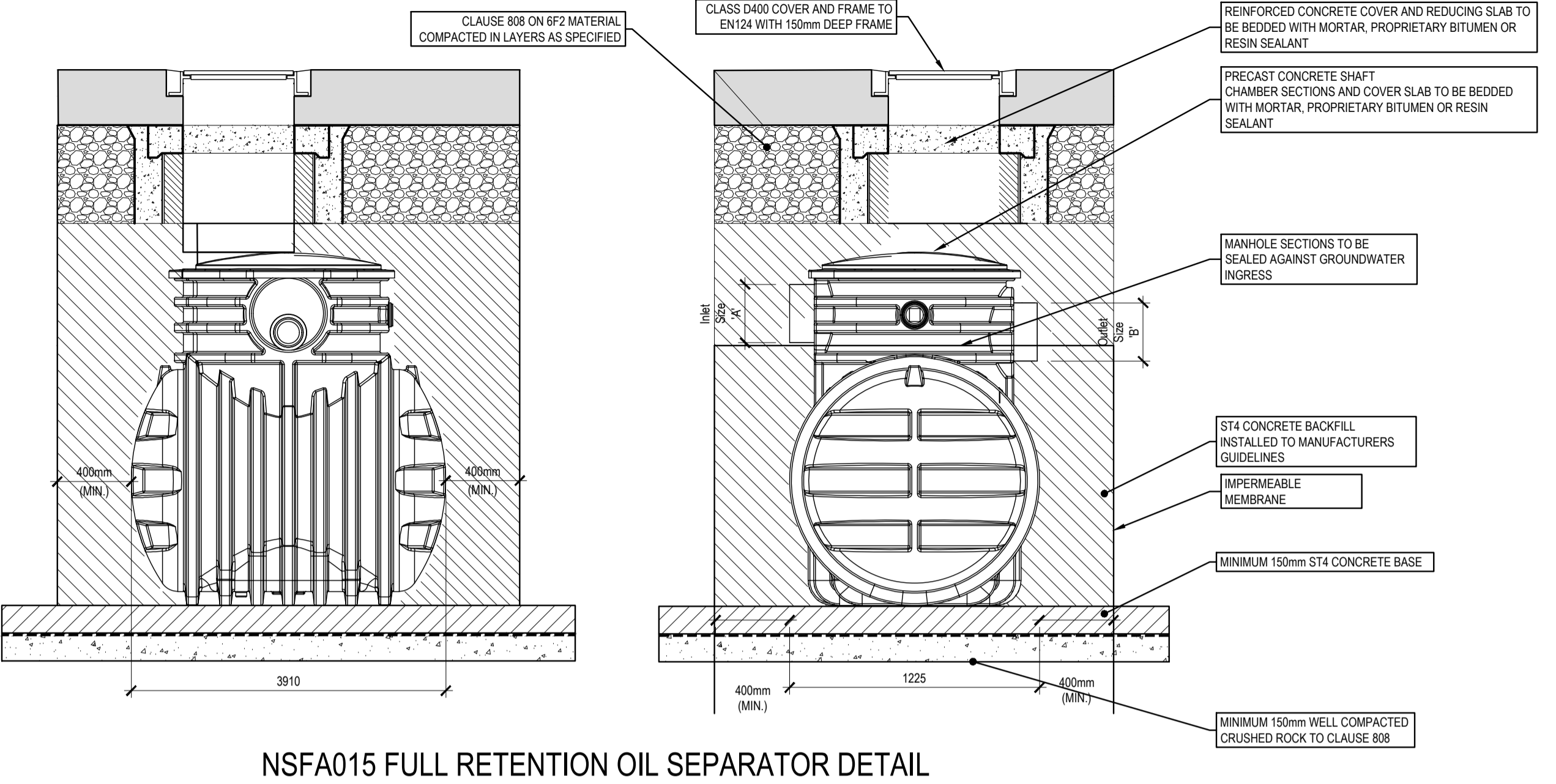
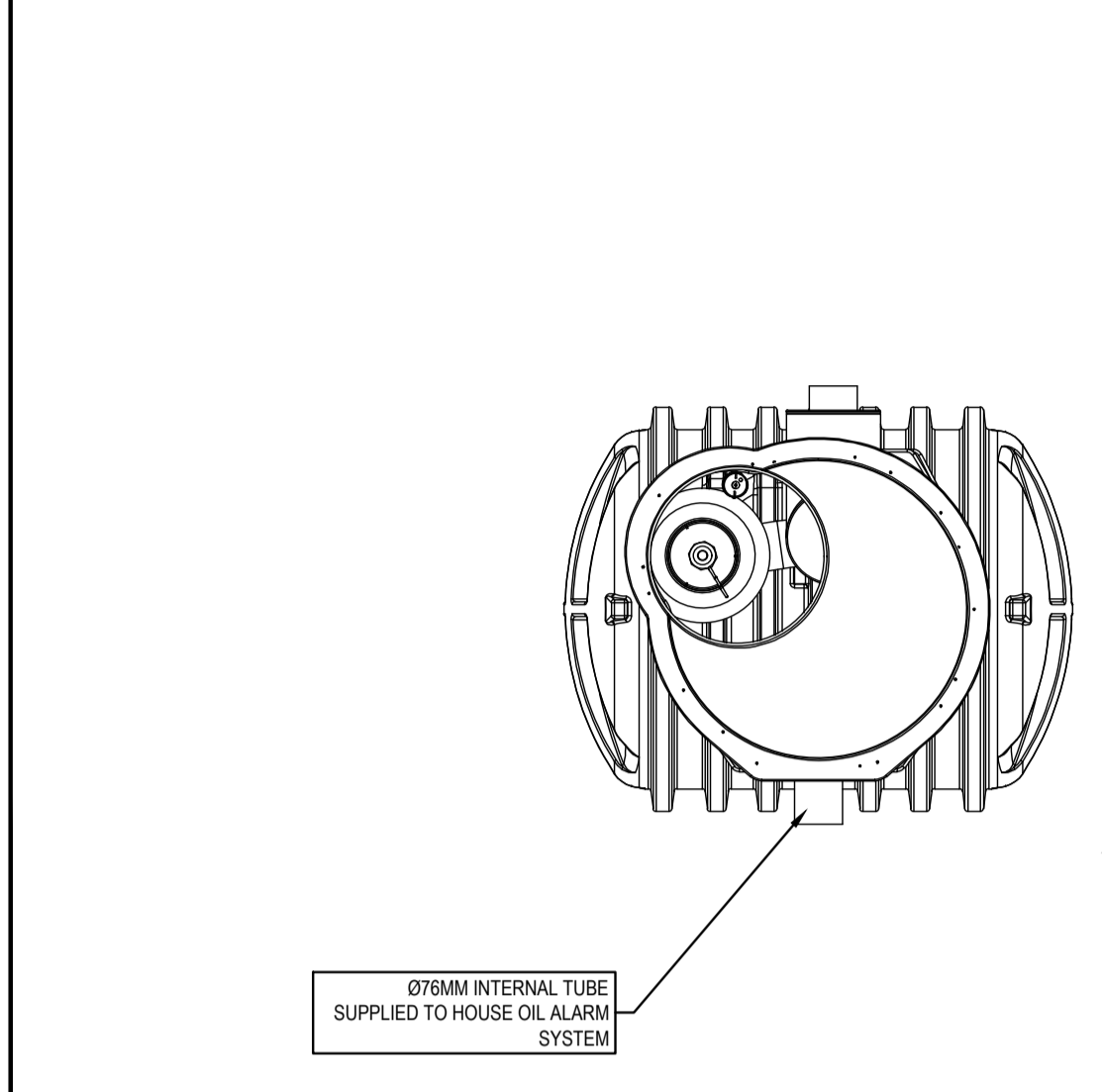


FLOW CONTROL MANHOLE DETAIL
SCALE 1:25

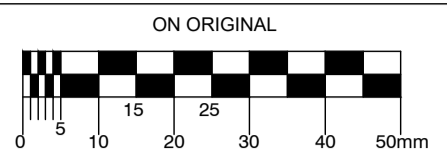
DIMENSIONS

UNIT REF No.	NOMINAL FLOW	STD PIPE Ø	FALL ACROSS UNIT	INLET SIZE 'A'	INLET SIZE 'B'
NSFA 015	15 US	200	50	225	225

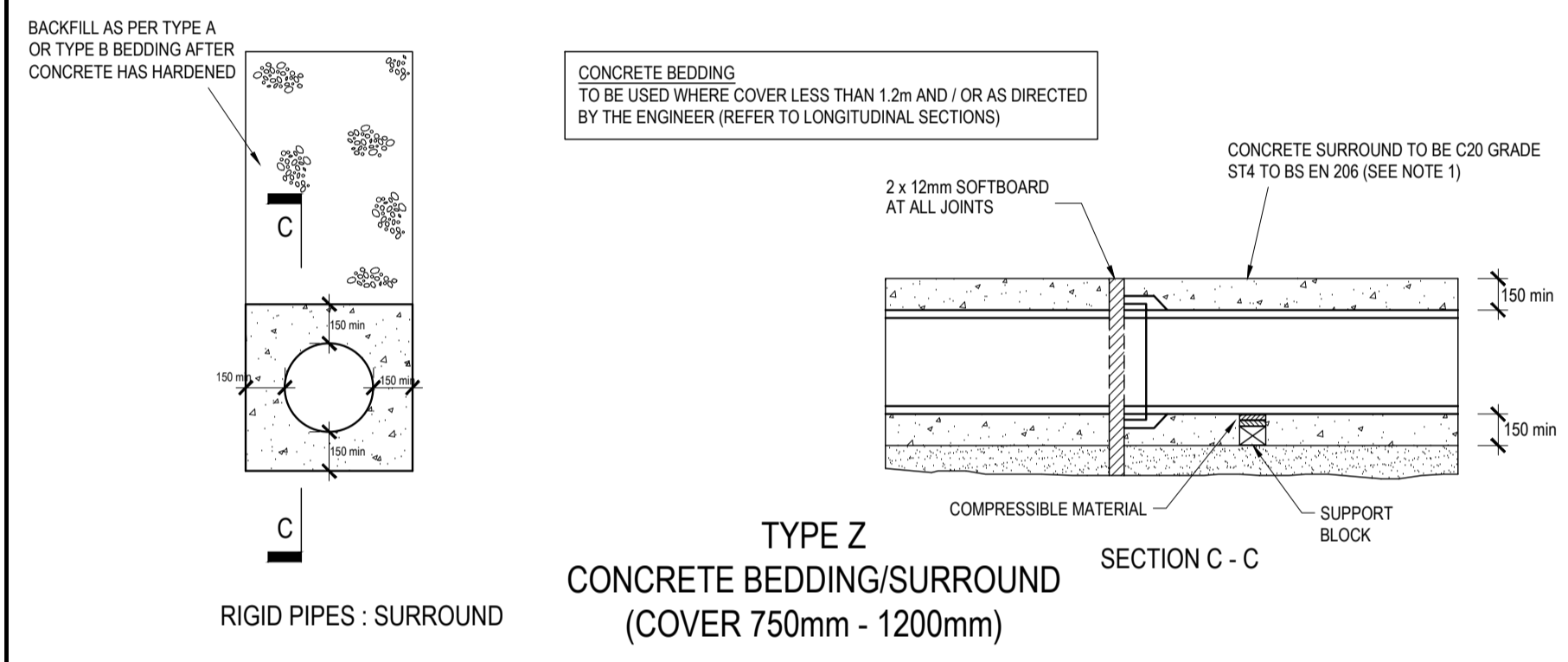


NSFA015 FULL RETENTION OIL SEPARATOR DETAIL
SCALE 1:25

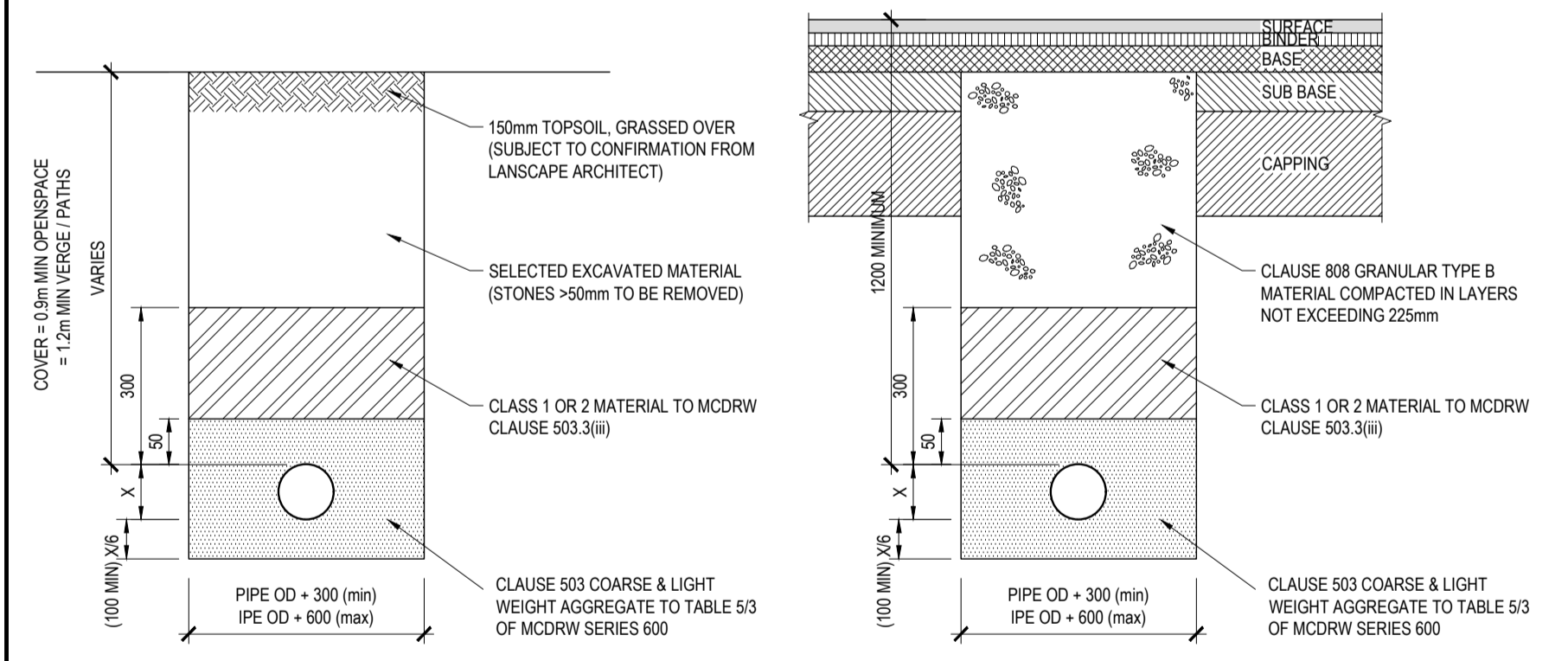
© COPYRIGHT OF THIS DRAWING IS RESERVED BY DBFL CONSULTING ENGINEERS. NO PART SHALL BE REPRODUCED OR TRANSMITTED WITHOUT THEIR WRITTEN PERMISSION.



- NOTES:
- WHERE ROCKS OR OTHER HARD TRENCH BOTTOM IS ENCOUNTERED, THE FIGURE DENOTED BY 'S' IS TO BE DOUBLED.
 - TYPE 1 GRANULAR MATERIAL: BROKEN STONE OR GRAVEL TO PASS 10mm SIEVE AND BE RETAINED ON 5mm SIEVE.
 - TYPE 2 GRANULAR MATERIAL: BROKEN STONE OR GRAVEL TO PASS 10mm - 25mm SIEVE, ACCORDING TO PIPE SIZE, (SEE TABLE) AND BE RETAINED ON 5mm SIEVE.
 - CLAUSE 601 S.R.W. BACKFILL: UNIFORM READILY COMPACTED MATERIAL FREE FROM TREE ROOTS, VEGETABLE MATTER, BUILDING DEBRIS, AND FROZEN SOIL AND EXCLUDING CLAY LUMPS RETAINED ON A 75mm SIEVE AND STONES RETAINED ON A 37.5mm SIEVE.
 - RIGID PIPES SHALL MEAN CAST OR SPUN IRON, CONCRETE OR CLAY.
 - GULLY GRATINGS AND FRAMES SHALL COMPLY WITH THE REQUIREMENTS OF I.S./E.N/124 1994. GULLIES SHALL BE CLASS D400.
 - GULLY WALLS SHALL BE CONSTRUCTED IN CLASS 30N/m² PRECAST OR INSITU CONCRETE OR ALTERNATIVELY IN SOLID CONCRETE BLOCKS DESIGNATED S10, STRENGTH 10N/m².
 - ALL PIPES TO BE BEDDED IN ACCORDANCE WITH MANUFACTURERS RECOMMENDATIONS.
 - SURFACE WATER SEWERS TO BE CLASS H CONCRETE TO IS EN1916 AND IS 6 2004.



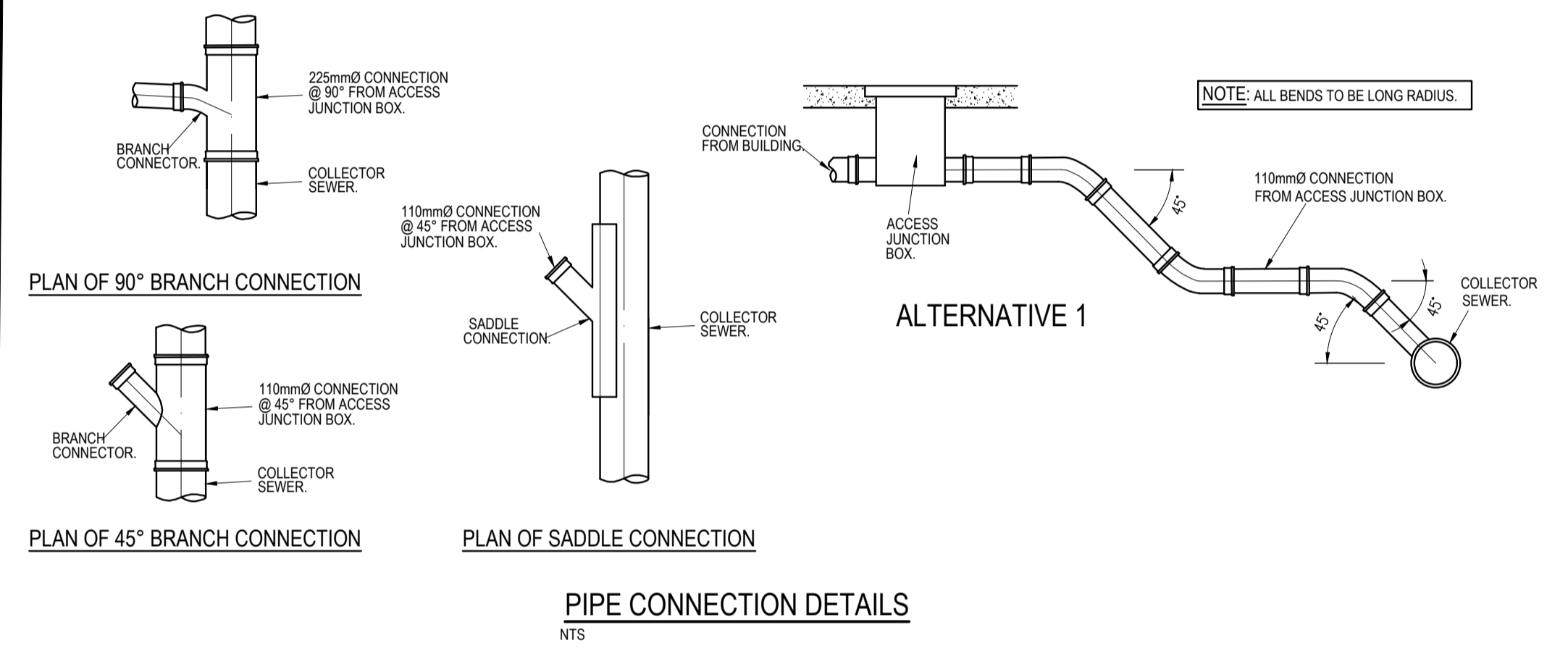
TYPE Z CONCRETE BEDDING/SURROUND (COVER 750mm - 1200mm)



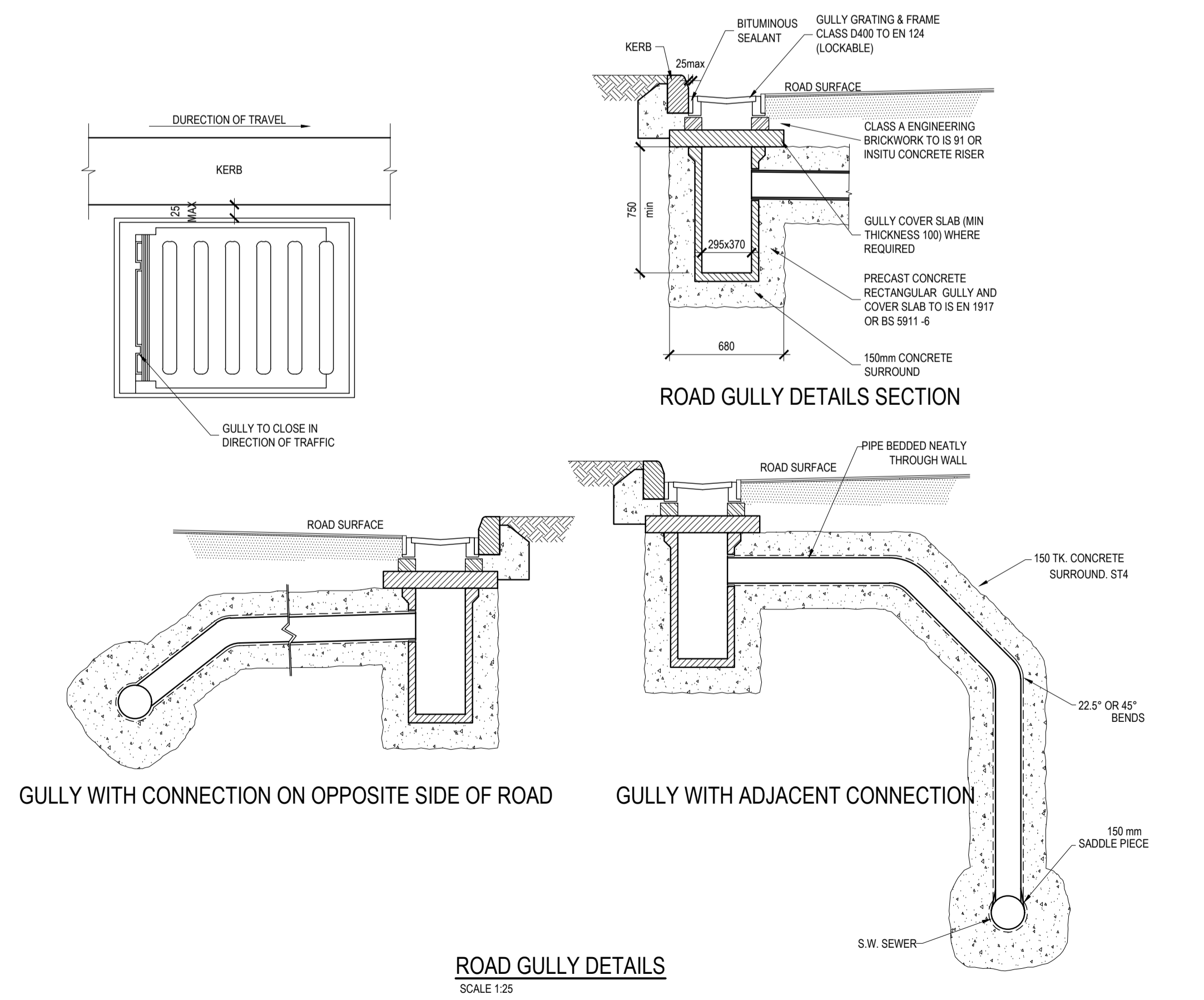
A - BEDDING/BACKFILL DETAIL ACROSS OPEN SPACE (SIMILAR)
B - BEDDING/BACKFILL DETAIL IN ROADWAYS/VERGES/PATHS
C - TRENCH BACKFILL/REINSTATEMENT DETAIL IN EXISTING ROADS (REFER TO FIGURE 2.19 ON DRAWING 170035-3113)

TYPE S (COVER > 1.2 METRES TO CROWN)

PIPE BEDDING DETAILS
SCALE 1:25



PIPE CONNECTION DETAILS
NTS



ROAD GULLY DETAILS
SCALE 1:25

REV	DATE	DESCRIPTION	BY	CHKD
P2	22-11-21	FOR SHD APPLICATION	BK	JVS
P1	03-12-19	FOR ABP APPLICATION	JVS	BK

PLANNING

DESIGNED	SPB	PREPARED	JVS
DATE	OCT 2019	CHECKED	BK

DBFL Consulting Engineers email: info@dbfl.ie www: www.dbfl.ie

0800 office Ormond House, Upper Ormond Quay, Dublin 7, Ireland. phone: +353 1 400 4000 fax: +353 1 400 4050

Waterford office Unit 2, The Chandlery, 1-2 O'Connell Street, Waterford, Ireland. phone: +353 51 339 550 fax: +353 51 844 913

PROJECT
PROPOSED DEVELOPMENT AT CORNELSCOURT

DRG. TITLE
TYPICAL DRAINAGE CONSTRUCTION DETAILS SHEET 2

CLIENT
CORNEL LIVING LIMITED

SCALE	AS SHOWN @A1	FILE REF.
DRG. NO.	180208-DBFL-XX-XX-DR-C-3011	P2